



Innovation  
that excites

# NISSAN QASHQAI



Print | Close

[Exterior design](#) | [Interior design](#) | [Technology & Performance](#) | [Interior space](#) | [Nissan Intelligent Mobility](#) | [Style & Accessories](#) | [Technical Specifications](#) | [Further Information](#)

[REQUEST A TEST DRIVE](#)





**INTELLIGENCE** is beautiful, and the smart, sophisticated design of the ultimate urban crossover proves it. Nissan QASHQAI combines stunning looks with efficient aerodynamics to help you enjoy enlightened city driving **AT ITS BEST.**

[Print](#) | [Close](#)

[Exterior design](#) | [Interior design](#) | [Technology & Performance](#) | [Interior space](#) | [Nissan Intelligent Mobility](#) | [Style & Accessories](#) | [Technical Specifications](#) | [Further Information](#)

[Page 1](#) | [Page 2](#) | [Page 3](#) | [Page 4](#)

[REQUEST A TEST DRIVE](#)



THINK IN SYNC.  
**MOVE INTO A NEW ERA.**

Nissan Intelligent Mobility is redefining the way we power, drive and integrate our cars into our lives. For the QASHQAI, it is about a suite of intelligent technologies that increase safety and make you more confident behind the wheel. From Intelligent Park Assist to Intelligent Emergency Braking with Pedestrian Recognition, Nissan QASHQAI is looking out for you and those around you.



Print | Close

[Exterior design](#) | [Interior design](#) | [Technology & Performance](#) | [Interior space](#) | [Nissan Intelligent Mobility](#) | [Style & Accessories](#) | [Technical Specifications](#) | [Further Information](#)

[Page 1](#) | [Page 2](#) | [Page 3](#) | [Page 4](#)

[REQUEST A TEST DRIVE](#)



**UPSCALE DOWN TO THE LAST DETAIL.**

Sleek LED headlamps

Alloy wheels

Rear lights with a strong signature and 3D effect

Latest Nissan family identity with "V-motion grille"

"Shark fin" antenna with navigation

Premium finishing touches on range topping Tekna+ grade

**SLEEKER LOOKS SMARTER DESIGN.**

It's never looked better, or felt better. Featuring a stunning range of styling updates including a sleek headlamp design, alloy wheels and a robust front grille and hood design, the QASHQAI is more sophisticated and dynamic than ever.



[Print](#) | [Close](#)

[Exterior design](#) | [Interior design](#) | [Technology & Performance](#) | [Interior space](#) | [Nissan Intelligent Mobility](#) | [Style & Accessories](#) | [Technical Specifications](#) | [Further Information](#)

[Page 1](#) | [Page 2](#) | [Page 3](#) | [Page 4](#)

[REQUEST A TEST DRIVE](#)





[Print](#) | [Close](#)

[Exterior design](#) | [Interior design](#) | [Technology & Performance](#) | [Interior space](#) | [Nissan Intelligent Mobility](#) | [Style & Accessories](#) | [Technical Specifications](#) | [Further Information](#)

[Page 1](#) | [Page 2](#) | [Page 3](#) | [Page 4](#)

[REQUEST A TEST DRIVE](#)





## FINE-TUNED TO PERFECTION.

Take control with confidence behind the premium, sports steering wheel, while QASHQAI's panoramic glass roof with one-touch electric shade lets the light pour in.

## PREMIUM QUALITY AND COMFORT.

- Sports D-shaped steering wheel
- Panoramic glass roof with one-touch electric shade
- Premium Nappa leather trim with 3D quilting
- 4-way Power lumbar support with driver seat memory function

[Print](#) | [Close](#)

[Exterior design](#) | [Interior design](#) | [Technology & Performance](#) | [Interior space](#) | [Nissan Intelligent Mobility](#) | [Style & Accessories](#) | [Technical Specifications](#) | [Further Information](#)

[REQUEST A TEST DRIVE](#)



NISSAN ADVANCED DRIVE-ASSIST DISPLAY  
**MORE ACTION LESS DISTRACTION.**

The New QASHQAI's Advanced Drive-Assist Display puts all your info right in front of you - just toggle between the screens using the steering wheel controls. Easy.

<p>12:53 23°C</p> <p>Speed 11 km/h</p> <p>+33612135699 Push &amp; Hold: Answer Push &amp; Hold: Reject</p> <p>D 380 43 km</p> <p><b>CALLER ID</b></p>	<p>12:53 23°C</p> <p>Driving Aids</p> <p>Settings</p> <p>D 380 44 km</p> <p><b>NISSAN SAFETY SHIELD</b></p>	<p>12:53 23°C</p> <p>Bluetooth Audio InfinitebX StreetLights Prelude</p> <p>Change Source</p> <p>D 380 43 km</p> <p><b>AUDIO</b></p>	<p>12:53 23°C</p> <p>COLOUR SELECTION</p> <p>P 380 42 km</p>
<p>12:53 23°C</p> <p>D102, Avenue de la ... 150 m</p> <p>D 380 42 km</p> <p><b>TURN-BY-TURN NAVIGATION</b></p>	<p>12:53 23°C</p> <p>Steering Effort Normal Sport</p> <p>P 380 42 km</p> <p><b>STEERING MODE</b></p>	<p>12:53 23°C</p> <p>Tyre Pressures bar</p> <p>1.2 2.3 3.4 2.1 1.3</p> <p>D 380 41 km</p> <p><b>TYRE PRESSURE MONITORING SYSTEM</b></p>	<p>12:53 23°C</p> <p>Parking Sensor</p> <p>R 380 42 km</p> <p><b>PARKING SENSORS DISPLAY</b></p>



\*Some features not available on all grades

Print | Close

[REQUEST A TEST DRIVE](#)



## NEW NISSANCONNECT

The all new Infotainment system on Qashqai comes with exciting new features like 3D Maps, Smartphone Integration, Voice Commands & multi touch 7" screen which you can customize as per your convenience. New NissanConnect also brings the familiar experience of your smartphone via Apple CarPlay® and Android Auto®.



**3D MAPS.** Navigate your way around the world with 3D maps.s.



**CUSTOMIZE HOME MENU.** Display your most frequently used features like audio, call history and traffic information.



**VOICE RECOGNITION.** Press the talk button on steering wheel to safely use voice commands for Navigation, Music & Phone.



**SINGLE LINE SEARCH.** Fast & Convenient search for destination or Point of Interests.



**YOUR MUSIC. YOUR WAY** Access your music using Bluetooth, USB or connect with Apple CarPlay or Android Auto.



Print | Close

## INTELLIGENT INTEGRATION TO MAKE YOUR CAR A MORE PRODUCTIVE SPACE.

Plan your trip ahead based on Real Time Traffic, Send destination to car or locate your parked vehicle using the Door to Door Navigation App. Your Navigation system can be updated Over the Air delivered via your Smartphone or by connecting to external WiFi Hotspot. TomTom Premium Traffic and Map Updates are free for 5 Years.



**PUSH DESTINATION TO CAR VIA A COMPUTER OR THE MOBILE APP.** Send Destination to Car using any interface and plan your trip before leaving.



**DOOR-TO-DOOR NAVIGATION.** The Mobile App enables you to navigate end to end, from where you parked your car to your destination.



**PREMIUM TRAFFIC DATA.** Get Accurate time to destination (ETA) information before you leave based on Real Time Traffic and decide the best route to your destination.



**FREE MAP UPDATES.** Get over The Air Updates or download them via USB to keep your system up to date. With New NissanConnect, Map Updates and Premium Traffic are free for the first 5 Years.



**DOOR-TO-DOOR NAVIGATION APP**  
Download the Door-to-Door Navigation App on your Smartphone and access all your maps on your next generation NissanConnect multi-touch display screen.



NAVIGATION  
POWERED BY TOMTOM



Print | Close



\*Nappa leather is only available on Tekna+ grade.  
Some parts of leather seats contain artificial leather

## RESERVE THOSE SEATS.

They're the best in the house: with their monoform design and finished in high quality Nappa leather with soft 3D quilting, the seats in the Nissan QASHQAI envelope you in lasting, luxurious comfort.

[Print](#) | [Close](#)

[Exterior design](#) | [Interior design](#) | [Technology & Performance](#) | [Interior space](#) | [Nissan Intelligent Mobility](#) | [Style & Accessories](#) | [Technical Specifications](#) | [Further Information](#)

[Page 1](#) | [Page 2](#)

[REQUEST A TEST DRIVE](#)



## ROOM WITH A VIEW.

Keep an open mind - There's always space for more. Fold down a rear seat or make a flat floor for bulky gear, and use those smart storage spaces to avoid clutter.

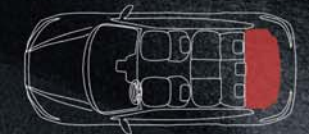
\*Luggage board system available from Acenta grade



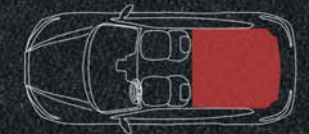
Nissan's divide-and-hide cargo system with adjustable shelves and dividers offers a variety of configurations. A bucket-type glove box and phone-holder with USB/12V power sockets and a twin cup holder come in very handy.

\*401 litres of boot space on Tekna and Tekna+ grades 1,569 litres of boot space with folded seats on Tekna and Tekna+ grades.

**430L** BOOT SPACE



**1,598L** WITH FOLDED SEATS



Print | Close

[Exterior design](#) | [Interior design](#) | [Technology & Performance](#) | [Interior space](#) | [Nissan Intelligent Mobility](#) | [Style & Accessories](#) | [Technical Specifications](#) | [Further Information](#)

Page 1 | Page 2

REQUEST A TEST DRIVE



**SEE MORE AROUND YOU  
A WHOLE NEW PERSPECTIVE.**

Parking and manoeuvring is a breeze when you've got an extra pair of eyes. The Nissan Intelligent Around-View Monitor uses four cameras to give you a virtual bird's-eye view of your QASHQAI with selectable split-scene close-ups of the front, rear and kerbside to give you an even better look. You'll be sure to fit into your chosen spot and every move you make will be simpler and more precise.

**RIGHT ON THE NOSE.**

In Drive, the display gives you both a front and overhead view, so you know just how far to pull up – without going too far.

**COMPLETE THE PICTURE.**

Located under the door mirrors, these cameras complete your virtual 360° bird's-eye view for every manoeuvre

**SPARE YOUR WHEELS.**

In Drive or Reverse, you can push the camera button to switch between the overhead view for a close-up side view. A great help for checking your distance from the kerb.

**BACKGROUND SAVVY.**

In Reverse, the display helps you see what's directly behind you, while the overhead view helps with smaller objects that might be hidden below your line of sight.



Print | Close

**REQUEST A TEST DRIVE**



GET A HAND WHEN YOU WANT IT  
**RELAX, YOU'RE NOT ALONE.**

Nissan Intelligent Mobility is taking your driving experience to the next level. It's bringing you and your QASHQAI closer through Intelligent Driving technologies that make you feel more confident and in control. It's turning driving into a more exhilarating experience and making the road a better place to be everyday.



**INTELLIGENT PARK ASSIST WITH REAR CROSS-TRAFFIC ALERT**

Let QASHQAI take over steering duties in tight parking spots - and let Rear Cross-Traffic Alert warn you of approaching traffic when you are reversing.

\*Available from Tekna grade

PARALLEL PARKING



BAY PARKING



REAR CROSS TRAFFIC ALERT



MOVING OBJECT DETECTION



[Print](#) | [Close](#)

[Exterior design](#) | [Interior design](#) | [Technology & Performance](#) | [Interior space](#) | [Nissan Intelligent Mobility](#) | [Style & Accessories](#) | [Technical Specifications](#) | [Further Information](#)

[Page 1](#) | [Page 2](#) | [Page 3](#) | [Page 4](#) | [Page 5](#) | [Page 6](#) | [Page 7](#)

[REQUEST A TEST DRIVE](#)





## ProPILOT, YOUR PARTNER FOR A SMARTER, MORE CONFIDENT DRIVE

Ready, set... enjoy. With Nissan ProPILOT\*, you can free yourself from driving stress while QASHQAI takes care of the little things. Just check the road conditions, switch it on and make the most of your journey. It turns your daily trip down the motorway into one of the best parts of the day.



### HELPS KEEP YOU CENTERED IN THE LANE

Monitors lane markings and helps steer the car to keep you centered in the lane.



### KEEPS AND ADJUSTS SPEED

Adjusts your car speed to maintain safe distance according to the flow of traffic.



### EASES DRIVING IN HEAVY TRAFFIC

Based on the traffic flow, it can bring your QASHQAI to a complete stop and then bring it back up to speed when traffic starts moving again.

\* ProPILOT is available on a limited range of vehicles. ProPILOT is an Advanced Driver Assist technology but cannot prevent collisions. ProPILOT is Intended for "Eyes on/ Hands On" for Highways only (road separated by Barriers). It is the driver's responsibility to stay alert, drive safely and be able to take control of the vehicle at any time.



Print | Close

[REQUEST A TEST DRIVE](#)



GET A HAND WHEN YOU WANT IT  
STEPS IN WHEN YOU NEED IT.

Nissan's Intelligent Driving technologies are always on the alert and ready to step in to keep you out of trouble.



**INTELLIGENT LANE INTERVENTION.**

This technology gives you a visual alert as well as assistance through subtle wheel braking to guide you back into the lane when drifting out without indicating.



**INTELLIGENT EMERGENCY BRAKING WITH PEDESTRIAN RECOGNITION.**

QASHQAI looks out for you - and those around you. If there are any objects in your way, this system will warn you. It will even help you to reduce speed if necessary.



**INTELLIGENT AUTO HEADLIGHTS WITH ADAPTIVE FRONT LIGHTING SYSTEM.**

QASHQAI's sleek headlamps intelligently light your way by automatically turning on when it gets dark or when you enter a tunnel or underground car park - and automatically turning off when you stop. The Adaptive Front Lighting System controls light distribution to improve your visibility at night. On a winding road, it will change the lighting pattern to compensate for the curve and at a crossroads, it will illuminate your chosen direction - left or right.



Print | Close



QASHQAI



**TRAFFIC SIGN RECOGNITION.** This system keeps you up to date with the latest speed limit by detecting road signs as you go.



**BLIND SPOT WARNING.** Boost your vision: the system will warn you if there are vehicles in the blind spots diagonally behind the car.

**SEE MORE AROUND YOU  
IT SENSES MOVEMENT AND WARNS YOU.**

Nissan's Intelligent Driving technologies use advanced radar technology to constantly monitor activity going on around you, keeping tabs on the traffic and helping you handle any unexpected situations.

Print | Close

[Exterior design](#) | [Interior design](#) | [Technology & Performance](#) | [Interior space](#) | [Nissan Intelligent Mobility](#) | [Style & Accessories](#) | [Technical Specifications](#) | [Further Information](#)

[Page 1](#) | [Page 2](#) | [Page 3](#) | [Page 4](#) | [Page 5](#) | [Page 6](#) | [Page 7](#)

[REQUEST A TEST DRIVE](#)



**DRIVE MORE LIKE A PRO**  
**GAIN CONFIDENCE,**  
**OWN THE ROAD.**

So agile and responsive, so smooth to handle, so supple and yet secure: the QASHQAI is an engaging drive thanks to Nissan's innovative Chassis Control technology.



**INTELLIGENT ENGINE BRAKE.** This technology adds engine braking to the Xtronic automatic transmission, applying greater control when cornering or braking. By minimising the frequency and effort normally required to brake the vehicle, the system increases driver comfort and safety.



**INTELLIGENT 4x4.** Off road or on road, the QASHQAI's 4x4 technology maximises tyre traction. Using advanced sensors, the Intelligent 4x4 system monitors the traction at the wheels and by measuring wheel slip, instantly redistributes torque by up to 50% to the rear wheels.



**INTELLIGENT RIDE CONTROL.** Take the rough with the smooth. This system applies subtle braking to prevent disturbance when encountering bumps and ensures a comfortably smooth ride.

Print | Close

[Exterior design](#) | [Interior design](#) | [Technology & Performance](#) | [Interior space](#) | [Nissan Intelligent Mobility](#) | [Style & Accessories](#) | [Technical Specifications](#) | [Further Information](#)

[Page 1](#) | [Page 2](#) | [Page 3](#) | [Page 4](#) | [Page 5](#) | [Page 6](#) | [Page 7](#)

[REQUEST A TEST DRIVE](#)





**DRIVE WITHOUT COMPROMISE**  
**OPTIMISE YOUR PERFORMANCE.**

Feel more in control of your drive thanks to the technologically advanced performance of the Qashqai new powertrain line up. Fully engineered to respect the environment, it reduces running costs while delivering even more power and torque for a smoother response, faster acceleration and quick, clean overtaking.



**1.3L NEW PETROL ENGINE.** Available in 140 or 160 PS, our new engine is designed and engineered to boost driving pleasure while improving energy efficiency to meet rigorous new European norms.

For the engine performance data such as CO<sub>2</sub> emission and fuel consumption please refer to model technical data sheet available in the brochure and in the dealership.

[Print](#) | [Close](#)

[Exterior design](#) | [Interior design](#) | [Technology & Performance](#) | [Interior space](#) | [Nissan Intelligent Mobility](#) | [Style & Accessories](#) | [Technical Specifications](#) | [Further Information](#)

[Page 1](#) | [Page 2](#) | [Page 3](#) | [Page 4](#) | [Page 5](#) | [Page 6](#) | [Page 7](#)

**REQUEST A TEST DRIVE**



## ELEGANCE PACK REFINE YOUR RIDE.

Pack your New QASHQAI with elegance and refinement. Start your accessory personalisation with a set of stylish black or chrome bumper finishers to enhance the front and rear design. Put your signature on your own QASHQAI with bi-coloured alloy wheels, illuminated entry guards and premium welcome lighting.

## CROSSOVER PACK ASSERT YOUR STYLE.

There's no style without substance. Give your QASHQAI an edge with a pack of front and rear styling plates combined with 19" alloy wheels, and get kitted out with handy accessories like a sturdy kid's table.



### ELEGANCE PACK

Rear bumper finisher, chrome  
Also available in glossy black

Rear black accent  
Also available in pearl white

19" WIND chrome  
diamond cut dark grey

### ELEGANCE PACK

Front bumper finisher, chrome  
Also available in glossy black

### CROSS OVER PACK

Front styling plate, silver  
Also available in glossy black

### CROSS OVER PACK

Rear styling plate, silver  
Also available in glossy black



Full trunk protection



Child seat



19" bi-coloured black and white



Side step



Side bar illuminated



Black rubber mat, velour mats, luxury textile mats

Print | Close

[Exterior design](#) | [Interior design](#) | [Technology & Performance](#) | [Interior space](#) | [Nissan Intelligent Mobility](#) | [Style & Accessories](#) | [Technical Specifications](#) | [Further Information](#)

Page 1 | Page 2

[REQUEST A TEST DRIVE](#)

## COLOURS



VIVID BLUE - PREMIUM METALLIC - RCA



CHESTNUT BRONZE - PREMIUM METALLIC - CAN



STORM WHITE - PEARLESCENT - QAB



BLADE SILVER - METALLIC - KYO



GUN METALLIC - METALLIC - KAD



NIGHTSHADE - METALLIC - GAB



PEARL BLACK - METALLIC - Z11



INK BLUE - METALLIC - RBN



MAGNETIC RED - METALLIC - NAJ



FLAME RED - SOLID - Z10

\*Magnetic Red & Flame Red not available with Plum Nappa Leather Trim

## WHEELS



16" STEEL WHEEL



17" AERO ALLOY WHEEL



18" TWO TONE ALLOY WHEEL



19" DIAMOND CUT ALLOY WHEEL

## DIMENSIONS

- A: Wheelbase: 2,646mm
- B: Overall length: 4,394mm
- C: Overall width: 1,806mm
- D: Overall height: 1,595mm



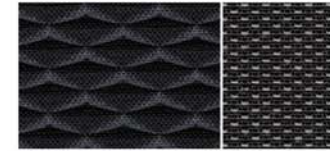
## TRIMS

### VISIA



CHARCOAL CLOTH

### N-CONNECTA



ANTHRACITE CLOTH, MONOFORM STYLE SEATS

### TEKNA



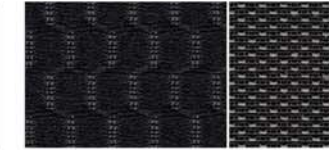
GRAPHITE PART LEATHER / PART CLOTH, MONOFORM STYLE SEATS

### TEKNA +



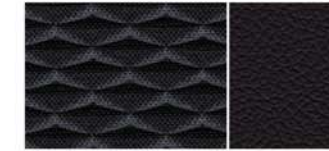
BLACK PREMIUM NAPPA LEATHER, MONOFORM STYLE SEATS

### 'ACENTA PREMIUM'



GRAPHITE CLOTH

### 'N-CONNECTA OPTION'



GRAPHITE PART LEATHER / PART CLOTH, MONOFORM STYLE SEATS

### TEKNA+ OPTION:



PLUM PREMIUM NAPPA LEATHER, MONOFORM STYLE SEATS

\*Some parts of leather seats contain artificial leather



Print | Close

AT NISSAN,  
**WE FOCUS  
ON QUALITY.**



## MASTERED THROUGH EXPERIENCE.

At Nissan, we do everything with the customer in mind. Every action and decision we make, is made with the utmost care, precision and quality because ultimately, it's for you. From conception to car construction, from testing to transparency, from customer service to commitment. Quality is in every fine detail.



### 360° PROCESS

We build in quality from the outset, meticulously conceiving each car to make them more comfortable and more durable through innovative design, intelligent technology and thoughtful details inspired by you.



### SAFETY

We work with our intelligent driving systems to constantly look out for you and help you avoid any mishaps for a bolder, more confident driving experience day after day. Our Around View Monitor uses 4 cameras to give you a virtual birds eye view of your car in its surroundings.



### EXTREME RELIABILITY

We push our cars to the limit to guarantee their daily performance and reliability. We travel millions of kilometres in pre-production tests, open and close doors and bonnets thousands of times a day and even use real volcanic dust from Japan to test window resistance.



### ULTIMATE PROOF | reevoo

Our commitment to quality is best demonstrated by you. Search for testimonials, reviews and ratings online or find out what people are saying about Nissan on Reevoo. It's the best place to compare vehicles and get real answers from real owners you can trust.

<https://www.nissan.co.uk/vehicles/new-vehicles/qashqai/customer-reviews.html>

Print | Close

[Exterior design](#) | [Interior design](#) | [Technology & Performance](#) | [Interior space](#) | [Nissan Intelligent Mobility](#) | [Style & Accessories](#) | [Technical Specifications](#) | [Further Information](#)

[REQUEST A TEST DRIVE](#)



OUR PROMISE. YOUR EXPERIENCE

**THERE'S NO TIME LIMIT** ON HOW LONG YOU WILL BENEFIT FROM OUR PROMISES. IF YOU HAVE JOINED THE YOU+NISSAN PROGRAM, AND WANT TO BE SPOKEN TO IN A GENUINE, OPEN AND HONEST MANNER, WE WILL LOOK AFTER YOU. FOREVER. **THAT IS OUR PROMISE.**

**FREE COURTESY CAR**

**We promise** to keep you on the road whilst your car is being serviced. Book in advance and we'll ensure that a free courtesy car is available for you. We even have electric cars available at select service points, and a range of other transport solutions to suit your needs.



**FREE VEHICLE HEALTH CHECK**

**We promise** to give your car a free health check prior to any work being carried out, so you know exactly what needs to be done, and how much it will cost. All our prices are also fully accessible online and at our dealers.

**SERVICE PRICE MATCH**

**We promise** to deliver the highest care for your Nissan thanks to the expertise of Nissan trained teams and the use of Nissan genuine parts. We simply know best how to service your Nissan. And to guarantee best value-for-money, Nissan will price match like-for-like quotes within 10km of your local dealer.



**LIFETIME NISSAN ASSISTANCE**

**We promise** to keep you on the road 24/7. Should anything unexpected happen, we guarantee 24-hour Nissan assistance, whatever the age of your Nissan.

ANYWHERE, ANYTIME, ANYTHING. JUST CALL 0800 000 000 AND WE'LL BE RIGHT THERE.

 **SERVICE CONTRACTS**

Nissan Service Contract is the best way to give your Nissan QASHQAI the maintenance it deserves! We take good care of your Nissan whilst keeping your aftercare at fix price over years. While bringing your car at our dealership, we will change your parts and fluids in accordance with Nissan official service schedule and perform check ups for peace of mind journeys. Total budget and plan control, Nissan will inform you of due visits and propose the most suitable service and timing for your services.

 **EXTENDED WARRANTY**

Nissan Extended Warranty gives you the opportunity to extend the 3 Years/100,000 km warranty for a longer period or mileage. Select the contract that best suits your driving usage. In case of a repair, only Nissan genuine parts will be used and fitted by Nissan trained technicians. For your peace of mind, 24/7 European roadside assistance is included (if applicable).



**AT NISSAN, YOU BRING OUT THE BEST IN US.**

You spark our imagination. You provoke our ingenuity. You inspire us to change the rules and innovate. And at Nissan, innovation is not just about additions and extensions; it's about crossing the line to reinvent the status quo. It's about developing unexpected solutions to satisfy your wildest and most pragmatic desires. At Nissan, we design cars, accessories and services that break the mould - making the practical exciting and the exciting practical to offer you a more exhilarating driving experience everyday.

**NISSAN QASHQAI OFFERS YOU:**

**3-YEAR WARRANTY OR 60,000 MILES**

**YEARLY OR 18,000 MILES INTERVAL FOR DIESEL ENGINES**

**YEARLY OR 18,000 MILES INTERVAL FOR PETROL ENGINES**

Print | Close

Exterior design | Interior design | Technology & Performance | Interior space | Nissan Intelligent Mobility | Style & Accessories | Technical Specifications | Further Information

**REQUEST A TEST DRIVE**



## NISSAN INTELLIGENT MOBILITY

Intelligent Mobility guides everything we do. At Nissan, we use new technologies to transform cars from mere transportation. Together the journey is more confident, connected, and exciting. Whether it is cars that share the task of driving or highways that charge your EV as you go along, it's all in the very near future. And it's a future already taking shape in the Nissan you drive today.

visit our website at: [www.nissan.co.uk](http://www.nissan.co.uk)

Follow Nissan QASHQAI on:



Every effort has been made to ensure that the content of this publication is correct at the time of going to press (NOVEMBER 2018). This brochure has been produced featuring prototype vehicles exhibited at motor shows. In accordance with the company's policy of continuously improving its products, Nissan Europe reserves the right to change at any time the specification and the vehicles described and shown in this publication. Nissan dealers will be informed of any such modifications as quickly as possible. Please check with your local Nissan dealer to receive the most up-to-date information. Because of the limitations of the printing processes used, the colours shown in this brochure may differ slightly from the actual colours of the paint and interior trim materials used. All rights reserved. Reproduction in whole or part of this brochure without the written permission of Nissan Europe is forbidden.

This brochure is made from chlorine free paper - MY18 QASHQAI brochure 11/2018 - Printed in EU.  
Created by DESIGNORY, France and produced by eg+ worldwide, France - Tel: +33 1 49 09 25 35. Part number: 99999-54371

Dealer stamp:



Print | Close

[Exterior design](#) | [Interior design](#) | [Technology & Performance](#) | [Interior space](#) | [Nissan Intelligent Mobility](#) | [Style & Accessories](#) | [Technical Specifications](#) | [Further Information](#)

[REQUEST A TEST DRIVE](#)





Innovation  
that excites

## NISSAN QASHQAI



Print | Close

[Exterior design](#) | [Interior design](#) | [Technology & Performance](#) | [Interior space](#) | [Nissan Intelligent Mobility](#) | [Style & Accessories](#) | [Technical Specifications](#) | [Further Information](#)

[Page 1](#) | [Page 2](#) | [Page 3](#) | [Page 4](#) | [Page 5](#) | [Page 6](#) | [Page 7](#) | [Page 8](#)

[REQUEST A TEST DRIVE](#)



# STANDARD EQUIPMENT

INTELLIGENCE is beautiful, and the smart, sophisticated redesign of the ultimate urban crossover proves it. The Nissan QASHQAI combines stunning looks with efficient aerodynamics to help you enjoy enlightened city driving AT ITS BEST.

## ALL NISSAN QASHQAIS COME WITH:

### SAFETY

- ABS with EBD and Brake Assist
- Electronic Stability Programme (ESP)
- Driver, passenger, side and curtain airbags
- Stand Still Assist with Auto Hold Function (Manual transmission only)
- Electric Parking Brake
- Chassis Control: Intelligent Trace Control and Intelligent Ride Control
- Height adjustable front headrests
- Front seat belts with load limiter and pretensioner
- Front seatbelt height adjustment
- 3 rear headrests
- 3 x 3-Point rear seatbelts with ELR
- ISOFIX childseat anchorage points (rear)
- Rear door childlocks
- Puncture repair kit
- Tyre Pressure Monitoring System

### SECURITY

- Remote central door locking with superlocking
- Engine immobiliser
- Thatcham alarm system

### AUDIO AND NAVIGATION

- AM/FM/CD audio system with DAB
- Remote audio control
- Bluetooth® with audio streaming
- 5" High Definition full colour TFT screen combimeter
- USB port
- AUX socket for MP3 players

### EXTERIOR STYLING

- Chrome glass surround
- Body coloured bumpers, handles and mirrors
- V-Motion front grille
- Underbody Vortex Generators
- Rear roof spoiler

### VENTILATION AND VISIBILITY

- LED Daytime Running Lights
- LED Signature Rear Lights

### CONVENIENCE

- One Touch front and rear electric windows with remote opening/closing
- Tilt and telescopic steering wheel
- Electric speed-sensitive power steering
- Selectable steering (Normal or Sport)
- Front centre console and armrest
- Height adjustable driver's seat
- Trip computer
- Cruise control and speed limiter
- Idle Stop/Start System
- Electrically adjustable door mirrors
- Heated door mirrors
- 60:40 Split folding rear seat

### OPTIONS\*

- Metallic Paint
- Premium Metallic Paint
- Pearlescent Paint

## VISIA

### IN ADDITION TO STANDARD EQUIPMENT

#### AUDIO

- 4 speakers

#### EXTERIOR STYLING

- 16" Steel wheels
- Matte black rear diffuser

#### INTERIOR STYLING

- Charcoal cloth trim
- Gun metal effect dashboard trim
- D-shaped steering wheel

#### VENTILATION AND VISIBILITY

- Manual air conditioning with pollen filter

#### OPTIONS\*

- Spare Wheel Pack
- Smart Vision Pack:
  - Traffic Sign Recognition
  - Anti Dazzle Rear View Mirror
  - Intelligent Emergency Braking with Pedestrian Recognition
  - Lane Departure Warning
  - Front and Rear Parking Sensors



\*Options available at additional cost

Print | Close

[Exterior design](#) | [Interior design](#) | [Technology & Performance](#) | [Interior space](#) | [Nissan Intelligent Mobility](#) | [Style & Accessories](#) | [Technical Specifications](#) | [Further Information](#)

[Page 1](#) | [Page 2](#) | [Page 3](#) | [Page 4](#) | [Page 5](#) | [Page 6](#) | [Page 7](#) | [Page 8](#)

REQUEST A TEST DRIVE

## ACENTA PREMIUM

### IN ADDITION TO VISIA

#### SAFETY AND SECURITY

- Smart Vision Pack:
  - High Beam Assist
  - Traffic Sign Recognition
  - Anti Dazzle Rear View Mirror
  - Intelligent Emergency Braking with Pedestrian Recognition
  - Lane Departure Warning
  - Front and Rear Parking Sensors

#### AUDIO AND NAVIGATION

- 6 speakers
- Apple CarPlay®
- Android Auto®
- TomTom Connected Services®
- Voice Control
- New NissanConnecta 7" Touchscreen Navigation and Entertainment System
- Shark Fin Antenna

#### EXTERIOR STYLING

- 17" Aero Alloy wheels

#### INTERIOR STYLING

- Graphite cloth trim
- Piano black dashboard trim
- Chrome interior door handles
- D-Shaped Leather steering wheel
- Leather gear lever
- Interior ambient lighting

#### CONVENIENCE

- Height adjustable passenger's seat
- Rear seat armrest with 2 cupholders
- Luggage board system (16 combinations)
- Auto-folding mirrors
- Driver and Passenger seats with manual lumbar support
- Auto-wipers
- Intelligent Auto Headlights
- Rear View Camera

#### VENTILATION AND VISIBILITY

- Automatic dual zone climate control with pollen filter
- Front fog lights

#### OPTIONS\*

- Spare Wheel Pack
- Heat Pack:
  - Front heated seats
  - ThermaClear heated windscreen



\*Options available at additional cost

## N-CONNECTA

### IN ADDITION TO ACENTA PREMIUM

#### SAFETY AND SECURITY

- Safety Shield+:
  - Intelligent Driver Alert
  - Blind Spot Warning
  - Rear Cross Traffic Alert
  - Moving Object Detection
- Intelligent Park Assist

#### EXTERIOR STYLING

- 18" Two Tone Alloy wheels
- Rear privacy glass
- Silver rear styling plate
- Silver Roof Rails

#### INTERIOR STYLING

- Graphite cloth trim
- Monoform sports seats
- Carbon effect dashboard trim

#### CONVENIENCE

- Intelligent Around View Monitor (360° colour camera)
- Start push button
- Colour front, rear and side view cameras
- Nissan i-Key

#### OPTIONS\*

- Space saver spare wheel
- Heat Pack:
  - Front heated seats
  - ThermaClear heated windscreen
- Glass Roof Pack:
  - Panoramic Glass roof
  - Electric One Touch shade
- Executive Pack:
  - Front heated seats
  - ThermaClear heated windscreen
  - Part leather Monoform sports seats\*\*
  - Electrically adjustable driver seat
- LED Pack:
  - LED headlights with Adaptive Front Lighting System
  - LED Signature Daytime Running Lights with Directional indicator
  - Automatic Headlight Levelling System
- Drive Assist Pack (1.5dCi 115 Manual):
  - Intelligent Cruise Control
  - Intelligent Lane Intervention
  - Lane Keep Assist



\*Options available at additional cost  
\*\*Some parts of leather seats contain artificial leather

Print | Close

[Exterior design](#) | [Interior design](#) | [Technology & Performance](#) | [Interior space](#) | [Nissan Intelligent Mobility](#) | [Style & Accessories](#) | [Technical Specifications](#) | [Further Information](#)

[Page 1](#) | [Page 2](#) | [Page 3](#) | [Page 4](#) | [Page 5](#) | [Page 6](#) | [Page 7](#) | [Page 8](#)

REQUEST A TEST DRIVE

## TEKNA

### IN ADDITION TO N-CONNECTA

#### SAFETY AND SECURITY

#### INTERIOR STYLING

- Graphite part leather / part cloth trim\*\*
- Monoform sports seats with electrically adjustable drivers seat

#### EXTERIOR

- 19" Diamond Cut Alloy wheels
- Panoramic Glass Roof

#### VENTILATION AND VISIBILITY

- LED headlights with Adaptive Front Lighting System
- LED Signature Daytime Running Lights with Directional indicator
- Automatic Headlight Levelling System

#### CONVENIENCE

- Front heated seats
- ThermaClear heated windscreen
- Electric One Touch Shade

#### AUDIO AND NAVIGATION

- Premium Bose® Audio System
- 8 Bose® Speakers: 2 Tweeters, 4 high and medium frequency door speakers
- 7.7-litre dual driver subwoofer
- Digital Amplifier

#### OPTIONS\*

- Drive Assist Pack (1.5dCi 115 Manual):
  - Intelligent Cruise Control
  - Intelligent Lane Intervention
  - Lane Keep Assist



\*Options available at additional cost  
\*\*Some parts of leather seats contain artificial leather

## TEKNA+

### IN ADDITION TO TEKNA

#### EXTERIOR STYLING

- Gloss Silver mirror caps

#### CONVENIENCE

- Electrically adjustable driver seat with memory function
- Electrically adjustable 4-way lumbar support on driver seat
- Electrically adjustable passenger seat with manual lumbar support
- Door mirrors with memory function
- Reverse Link Door Mirrors

#### INTERIOR STYLING

- Black Nappa Leather trim with 3D quilting\*\*
- Dark headlining

#### OPTIONS\*

- Plum Nappa Leather trim
- Drive Assist Pack (1.5dCi 115 Manual):
  - Intelligent Cruise Control
  - Intelligent Lane Intervention
  - Lane Keep Assist



\*Options available at additional cost  
\*\*Some parts of leather seats contain artificial leather

Print | Close

[Exterior design](#) | [Interior design](#) | [Technology & Performance](#) | [Interior space](#) | [Nissan Intelligent Mobility](#) | [Style & Accessories](#) | [Technical Specifications](#) | [Further Information](#)

[Page 1](#) | [Page 2](#) | [Page 3](#) | [Page 4](#) | [Page 5](#) | [Page 6](#) | [Page 7](#) | [Page 8](#)

REQUEST A TEST DRIVE

## COLOURS



VIVID BLUE  
PREMIUM METALLIC



CHESTNUT BRONZE  
PREMIUM METALLIC



STORM WHITE  
PEARLESCENT



BLADE SILVER  
METALLIC



GUN METALLIC  
METALLIC



NIGHTSHADE  
METALLIC



PEARL BLACK  
METALLIC



INK BLUE  
METALLIC



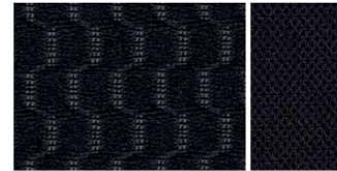
MAGNETIC RED  
METALLIC



FLAME RED  
SOLID

\*Magnetic Red and Flame Red paint colours not available with Plum Nappa Leather Trim

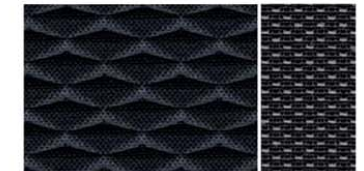
## TRIMS



VISIA  
CHARCOAL CLOTH



ACENTA PREMIUM  
GRAPHITE CLOTH



N-CONNECTA  
GRAPHITE CLOTH,  
MONOFORM STYLE SEATS



N-CONNECTA OPTION / TEKNA  
GRAPHITE PART LEATHER / PART CLOTH,  
MONOFORM STYLE SEATS



TEKNA+  
BLACK PREMIUM NAPPA LEATHER,  
MONOFORM STYLE SEATS



TEKNA+ OPTION  
PLUM PREMIUM NAPPA LEATHER,  
MONOFORM STYLE SEATS

## WHEELS



16" Steel wheel  
VISIA



17" Aero alloy wheel  
ACENTA PREMIUM



18" Two Tone alloy wheel  
N-CONNECTA



19" Diamond Cut alloy wheel  
TEKNA, TEKNA+

Some parts of leather seats contain artificial leather

Print | Close

Exterior design | Interior design | Technology & Performance | Interior space | Nissan Intelligent Mobility | Style & Accessories | [Technical Specifications](#) | Further Information

Page 1 | Page 2 | Page 3 | Page 4 | [Page 5](#) | Page 6 | Page 7 | Page 8

REQUEST A TEST DRIVE

## TECHNICAL SPECIFICATION

MODEL	1.3 DIG-T 140 PETROL		1.3 DIG-T 160 PETROL		1.5 dCi 115 DIESEL		1.7 dCi 150 DIESEL		
	6-speed manual	6-speed manual	7-speed DCT auto transmission	6-speed manual	7-speed DCT auto transmission	6-speed manual	6-speed manual	Xtronic auto transmission	
	2WD		2WD		2WD		4WD		
Available grades	ALL	ACENTA PREMIUM, N-CONNECTA, TEKNA, TEKNA+	ACENTA PREMIUM, N-CONNECTA, TEKNA, TEKNA+	ALL	ACENTA PREMIUM, N-CONNECTA, TEKNA, TEKNA+	N-CONNECTA, TEKNA, TEKNA+	N-CONNECTA, TEKNA, TEKNA+	N-CONNECTA, TEKNA, TEKNA+	
Seating capacity	persons	5							

ENGINE									
Engine capacity	cc	1332			1461	1461	1749	1749	1749
No. of cylinders, configuration		4 in line							
Max. engine power <sup>(1)</sup>	kw(PS)/min-1	103 (140)/5,000	117 (160)/5,500	117 (160)/5,500	85 (115)/3750	85 (115)/3750	110(150)/4600	110(150)/4600	110(150)/4600
Max. torque <sup>(1)</sup>	Nm/min-1	240/1600-3500	260/1600-3500	270/1600-3500	285/2000	285/2000	340/1750	340/1750	340/1750
Fuel type		Petrol				Diesel			
Fuel tank capacity	Litres	55					65		

DRIVE TRAIN									
Transmission type		6-speed manual	7-speed DCT auto transmission	6-speed manual	7-speed DCT auto transmission	6-speed manual	6-speed manual	Xtronic auto transmission	
Driven wheels		2WD					4WD		
Nissan Stop/Start technology		Yes							

CHASSIS									
Wheel size		16x6.5J, 17x7.0J, 18x7.0J, 19x7.0J	17x7.0J, 18x7.0J, 19x7.0J	17x7.0J, 18x7.0J, 19x7.0J	16x6.5J, 17x7.0J, 18x7.0J, 19x7.0J	17x7.0J, 18x7.0J, 19x7.0J	18x7.0J, 19x7.0J	18x7.0J, 19x7.0J	18x7.0J, 19x7.0J
Tyre size		215/65 R16, 215/60 R17, 215/55 R18, 225/45 R19	215/60 R17, 215/55 R18, 225/45 R19	215/60 R17, 215/55 R18, 225/45 R19	215/65 R16 215/60 R17 215/55 R18, 225/45 R19	215/60 R17, 215/55 R18, 225/45 R19	215/55 R18, 225/45 R19	215/55 R18, 225/45 R19	215/55 R18, 225/45 R19

1) In accordance with 1999/99/EC. Figures are intended for comparisons between vehicles and may not reflect real driving results. Optional equipment, maintenance, driving behaviour, road and weather conditions may affect the official results.  
 2) Figures in accordance with EC Directive. Kerb weight condition is without driver and including coolant, oils, fuel, spare wheel and tools. Pay load will be reduced depending on the options and/or accessories installed.  
 3) In accordance with 1999/100/EC. Figures are intended for comparisons between vehicles and may not reflect real driving results. (Optional equipment, maintenance, driving behaviour, road and weather conditions may affect the official results)  
 Advertisements placed for WLTP tested petrol/diesel model from 1st January 2019  
 WLTP figures shown are for comparability purposes only compare figures with vehicles tested to the same technical procedures. Actual real world driving results may vary depending on factors such as weather conditions, driving styles, vehicle load or any accessories fitted after registration. WLTP is a new test used for fuel consumption and CO<sub>2</sub> figures however until April 2020 the CO<sub>2</sub> figures are based on the outgoing (NEDC) test cycle which will be used to calculate vehicle tax on first registration.

MODEL	1.3 DIG-T 140 PETROL		1.3 DIG-T 160 PETROL		1.5 dCi 115 DIESEL		1.7 dCi 150 DIESEL		
	6-speed manual	6-speed manual	7-speed DCT auto transmission	6-speed manual	7-speed DCT auto transmission	6-speed manual	6-speed manual	Xtronic auto transmission	
	2WD		2WD		2WD		4WD		
Available grades	ALL	ACENTA PREMIUM, N-CONNECTA, TEKNA, TEKNA+	ACENTA PREMIUM, N-CONNECTA, TEKNA, TEKNA+	ALL	ACENTA PREMIUM, N-CONNECTA, TEKNA, TEKNA+	N-CONNECTA, TEKNA, TEKNA+	N-CONNECTA, TEKNA, TEKNA+	N-CONNECTA, TEKNA, TEKNA+	
Seating capacity	persons	5							

WEIGHTS & DIMENSIONS										
Gross Vehicle Weight	kg	1870	1870	1885	1910	1975	2020	2065	2110	
Kerb weight min/max	kg	1300-1435	1300-1435	1315-1445	1385-1510	1400-1530	1450-1575	1533-1620	1580 - 1665	
Max. payload <sup>(2)</sup>	kg	495	495	495	495	500	495	457	455	
Max. trailer weight	braked	kg	1300	1500	1500	1450	1450	2000	2000	1650
	unbraked	kg	687	687	695	730	737	750	750	750
Max axle weight	Front	kg	977	977	1011	1040	1074	1094	1117	1167
	Rear	kg	960	960	958	995	1024	994	1007	1001
Max vertical load on coupling point	kg	100								
Overall length	mm	4394								
Overall width	excluding mirrors	mm	1806							
	including mirrors	mm	2070							
Overall height	mm	1590								
Min. turning circle (kerb to kerb)	m	10.72								
Luggage space	max. length	mm	1671							
	max. width	mm	1096							
Luggage capacity	VDA	l	430*							
	max. with folded seats (VDA)	l	1598**							

\*Luggage capacity changes to 401L with Bose® audio system  
 \*\*Luggage capacity with seats folded changes to 1549L Bose® audio system  
 Advertisements placed for WLTP tested petrol/diesel model from 1st January 2019

Print | Close

Exterior design | Interior design | Technology & Performance | Interior space | Nissan Intelligent Mobility | Style & Accessories | **Technical Specifications** | Further Information

Page 1 | Page 2 | Page 3 | Page 4 | Page 5 | **Page 6** | Page 7 | Page 8

REQUEST A TEST DRIVE

## TECHNICAL SPECIFICATION

MODEL	6-speed manual	1.3 DIG-T 160 PETROL		1.5 dCi 115 DIESEL		1.7 dCi 150 DIESEL			
		6-speed manual	7-speed DCT auto transmission	6-speed manual	7-speed DCT auto transmission	6-speed manual		Xtronic auto transmission	
		2WD				4WD			
Available grades	ALL	ACENTA PREMIUM, N-CONNECTA, TEKNA, TEKNA+	ACENTA PREMIUM, N-CONNECTA, TEKNA, TEKNA+	ALL	ACENTA PREMIUM, N-CONNECTA, TEKNA, TEKNA+	N-CONNECTA, TEKNA, TEKNA+	N-CONNECTA, TEKNA, TEKNA+	N-CONNECTA, TEKNA, TEKNA+	
Seating capacity	persons	5							

Performance										
Fuel consumption	Low Phase - Min/Max	I/100km	91 / 9.2	9.0 / 9.1	91 / 9.2	5.8 / 6.0	5.8 / 5.9	6.6 / 6.7	7.4 / 7.5	9.3 / 9.4
		mpg	47.4 / 49.1	31.4 / 31.1	31.0 / 30.8	48.8 / 47.4	48.9 / 47.5	42.0 / 42.5	37.8 / 38.0	30.2 / 30.5
	Medium Phase - Min/Max	I/100km	6.6 / 6.9	6.5 / 6.8	6.5 / 6.7	5.0 / 5.2	5.1 / 5.2	5.4 / 5.5	5.9 / 5.9	6.6 / 6.7
		mpg	42.8 / 41.1	43.7 / 41.8	43.7 / 42.5	56.2 / 54.3	55.3 / 54.7	51.7 / 52.2	47.7 / 48.0	42.0 / 42.5
	High Phase - Min/Max	I/100km	5.9 / 6.1	5.9 / 6.1	5.7 / 5.9	4.6 / 4.8	4.6 / 4.7	4.8 / 4.9	5.2 / 5.2	5.8 / 5.9
		mpg	48.3 / 46.4	48.1 / 46.4	49.7 / 48.1	61.1 / 59.3	61.9 / 60.5	57.7 / 58.4	54.1 / 54.5	48.2 / 48.6
Extra High Phase - Min/Max	I/100km	6.9 / 7.2	7.0 / 7.3	7.0 / 7.2	5.9 / 6.0	5.8 / 5.9	6.1 / 6.1	6.3 / 6.4	7.0 / 7.0	
	mpg	40.7 / 39.4	39.9 / 38.8	39.9 / 38.9	48.3 / 47.3	49.1 / 47.6	46.1 / 46.6	44.1 / 44.5	40.2 / 40.5	
Combined - Min/Max	I/100km	6.8 / 7.1	6.8 / 7.1	6.9 / 7.1	5.3 / 5.5	5.3 / 5.4	5.6 / 5.7	6.0 / 6.1	6.9 / 6.9	
	mpg	41.4 / 40.1	41.4 / 40.0	40.7 / 40.1	53.3 / 51.9	53.7 / 52.4	49.6 / 50.2	46.4 / 46.8	40.9 / 41.2	
CO <sub>2</sub> mass emission (combined)	g/kg	16" & 17"	121	121	122	100	106	-	-	-
Emission Level		18" & 19"	130	130	131	110	112	127	138	154
Max. Speed	kph / mph	Euro6d-temp								
Acceleration	0 - 62 mph (0 - 100 kph)	sec	10.5	8.9	9.9	12.3	13.0	9.5	9.5	11.2

Figures shown are for comparability purposes, only compare fuel consumption and CO<sub>2</sub> figures with other cars tested to the same technical procedures. Figures may not reflect real driving results which will vary depending upon a number of factors including weather conditions, driving styles, vehicle load or any accessories fitted after registration. There is a new test used for fuel consumption and CO<sub>2</sub> figures. The CO<sub>2</sub> figures shown however, are based on the outgoing (NEDC) test cycle and will be used to calculate vehicle tax on first registration. Advertisements placed for WLTP tested petrol/diesel model from 1st January 2019.

## PRICE LIST

Grade	Engine	Transmission	Basic Price £	VAT £	Total Retail £	On The Road Price £
VISIA	1.5 dCi 115	6 Manual	17,825	3,565	21,390	21,595
	1.3 DIG-T 140	6 Manual	16,475	3,295	19,770	19,995
ACENTA PREMIUM	1.3 DIG T 140	6 Manual	18,896	3,779	22,675	22,900
	1.3 DIG T 160	6 Manual	19,813	3,963	23,775	24,000
	1.3 DIG T 160	7 Speed DCT	21,021	4,204	25,225	25,450
	1.5 dCi 115	6 Manual	20,246	4,049	24,295	24,500
N-CONNECTA	1.5 dCi 115	7 Speed DCT	21,438	4,288	25,725	25,950
	1.3 DIG T 140	6 Manual	20,313	4,063	24,375	24,600
	1.3 DIG T 160	6 Manual	21,229	4,246	25,475	25,700
	1.3 DIG T 160	7 Speed DCT	22,404	4,481	26,885	27,150
	1.5 dCi 115	6 Manual	21,646	4,329	25,975	26,200
	1.5 dCi 115	7 Speed DCT	22,821	4,564	27,385	27,650
	1.7 dCi 150	6 Manual	22,946	4,589	27,535	27,800
	1.7 dCi 150	4WD 6 Manual	24,104	4,821	28,925	29,510
	1.7 dCi 150	4WD CVT	25,050	5,010	30,060	30,970
	TEKNA	1.3 DIG T 140	6 Manual	22,229	4,446	26,675
1.3 DIG T 160		6 Manual	23,146	4,629	27,775	28,000
1.3 DIG T 160		7 Speed DCT	24,321	4,864	29,185	29,450
1.5 dCi 115		6 Manual	23,563	4,713	28,275	28,500
1.5 dCi 115		7 Speed DCT	24,738	4,948	29,685	29,950
1.7 dCi 150		6 Manual	24,863	4,973	29,835	30,100
1.7 dCi 150		4WD 6 Manual	26,021	5,204	31,225	31,810
1.7 dCi 150		4WD CVT	26,967	5,393	32,360	33,270
TEKNA+	1.3 DIG T 140	6 Manual	23,229	4,646	27,875	28,100
	1.3 DIG T 160	6 Manual	24,146	4,829	28,975	29,200
	1.3 DIG T 160	7 Speed DCT	25,321	5,064	30,385	30,650
	1.5 dCi 115	6 Manual	24,563	4,913	29,475	29,700
	1.5 dCi 115	7 Speed DCT	25,738	5,148	30,885	31,150
	1.7 dCi 150	6 Manual	25,863	5,173	31,035	31,300
	1.7 dCi 150	4WD 6 Manual	27,021	5,404	32,425	33,010
1.7 dCi 150	4WD CVT	27,967	5,593	33,560	34,470	

COMPANY CAR DRIVERS				
P11D VALUE £	BIK %	MONTHLY £ BIK AT 20%	MONTHLY £ BIK AT 40%	MONTHLY £ BIK AT 45%
21,390	28%	100	200	225
19,770	28%	92	185	208
22,675	28%	106	212	238
23,775	28%	111	222	250
25,225	28%	118	235	265
24,295	28%	113	227	255
25,725	29%	124	249	280
24,375	30%	122	244	274
25,475	30%	127	255	287
26,885	30%	134	269	302
25,975	30%	130	260	292
27,385	30%	137	274	308
27,535	33%	151	303	341
28,925	35%	169	337	380
30,060	37%	185	371	417
26,675	30%	133	267	300
27,775	30%	139	278	312
29,185	30%	146	292	328
28,275	30%	141	283	318
29,685	30%	148	297	334
29,835	33%	164	328	369
31,225	35%	182	364	410
32,360	37%	200	399	449
27,875	30%	139	279	314
28,975	30%	145	290	326
30,385	30%	152	304	342
29,475	30%	147	295	332
30,885	30%	154	309	347
31,035	33%	171	341	384
32,425	35%	189	378	426
33,560	37%	207	414	466

Print | Close

Exterior design | Interior design | Technology & Performance | Interior space | Nissan Intelligent Mobility | Style & Accessories | [Technical Specifications](#) | Further Information

Page 1 | Page 2 | Page 3 | Page 4 | Page 5 | Page 6 | [Page 7](#) | Page 8

REQUEST A TEST DRIVE

## OPTIONS

	VISIA	ACENTA PREMIUM	N-CONNECTA	TEKNA	TEKNA+	BASIC £	VAT £	TOTAL £
Metallic Paint	○	○	○	○	○	47917	95.83	575
Premium Metallic Paint	○	○	○	○	○	620.83	124.17	745
Pearlescent Paint	○	○	○	○	○	620.83	124.17	745
Smart Vision Pack: Anti Dazzle Rear View Mirror, Intelligent Emergency Braking with Pedestrian Recognition, Lane Departure Warning, Front and Rear Parking Sensors, Traffic Sign Recognition	○	●	●	●	●	458.33	91.67	550
Drive Assist Pack (1.5 dCi 115 Manual): Intelligent Cruise Control, Intelligent Lane Intervention, Lane Keep Assist**			○	○	○	412.50	82.50	495
Glass Roof Pack: Panoramic Glass Roof with One-touch electric shade			○	●	●	375.00	75.00	450
Heat Pack: Front Heated Seats and ThermoClear Heated Windscreen		○	○	●	●	245.83	49.16	295
LED Pack: LED Headlights, Adaptive Front Lighting System, Signature LED Daytime Running Lights, Automatic Headlight Levelling System			○	●	●	412.50	82.50	495
Executive Pack: Part Leather Trim, Front Heated Seats, Driver Electric Seat Adjustment, ThermoClear Heated Windscreen			○	●		745.83	149.17	895
Plum Nappa Leather Trim					○	412.50	82.50	495
Spare Wheel Pack*	□	□	□	□	□	179.17	35.83	215
17" Snow Flake alloy wheels* - silver, black or grey	□	□	□	□	□	769.16	153.83	922.99
19" Wind alloy wheels* - silver, black or grey	□	□	□	□	□	1007.32	201.46	1208.78
19" Hibiscus alloy wheels* - silver, black or grey	□	□	□	□	□	1007.32	201.46	1208.78
Side styling bars stainless steel with illumination	□	□	□	□	□	628.93	125.79	754.72
Cross over Pack (front and rear styling plate)	□	□	□	□	□	416.67	83.33	500
Cross bars for roof railing	□	□	□	□	□	192.83	38.57	231.39
Dog guard/boot separator	□	□	□	□	□	186.19	37.24	223.43
Protection Pack: Velour Mats, Soft Trunkliner, Mudguards and Safety Kit	□	□	□	□	□	190.83	38.17	229
Design Pack: Front Lip Finisher and Rear Bumper Finisher (Elegance Pack)	□	□	□	□	□	249.17	49.83	299
Welcoming Lights	□	□	□	□	□	210.41	50.33	301.99

Optional - ○ Standard - ● Optional Dealer Fit - □

\*Price quoted is for a set of 4 wheels and does not include Tyres or TPMS

\*\*Drive Assist Pack requires selection of either Heat Pack, or Executive Pack on N-Connecta grade

\*Spare wheel pack not applicable with Bose®

Dealer fit option prices include fitting but are only a guide. Please check with your local Nissan dealer for exact prices.

## GPF & DPF FILTER

### WHAT IS A GPF & DPF?

A **Gasoline Particulate Filter (GPF)** or **Diesel Particulate Filter (DPF)** forms part of the vehicle's exhaust in order to limit the amount of soot particles contained within the exhaust gas passing into the atmosphere.

When the amount of soot in the filter reaches a specific level, this needs to be reduced in order to maintain the filter's function.

This reduction is called '**REGENERATION**' and is carried out by the vehicle's electronic control system which raises the exhaust gas temperatures during normal driving. If a vehicle requires frequent regeneration due to driving style, these high temperatures cause the engine oil to degrade more quickly.

However, from 2011 onwards Nissan vehicles were fitted with an **OIL CHANGE SUPERVISOR (OCS)** as well as a GPF or DPF to help monitor the condition of the oil and ensure the quality never falls below a minimum level.

### WHAT IF I ONLY DRIVE SHORT JOURNEYS?

If the vehicle is only driven for short journeys, or at low speed, then it may not be possible for regeneration to occur. In this situation, the below warning lights will be illuminated on your dashboard.



Please refer to your Owner's Manual for further information.

After seeing these warning lights you need to drive, as soon as possible, above 40mph until the light goes out. This can take up to 30 minutes depending on the amount of soot collected in the filter.

### WHAT IF I IGNORE THEM?

If you continue to drive at low speeds the exhaust gas temperatures cannot rise, so regeneration cannot occur. In this instance, a combination of the below warning lights will be illuminated on you dashboard.



In this case, and in order to protect the engine and DPF Filter, the vehicle will require '**SERVICE REGENERATION**' which can only be carried out by a workshop equipped with Nissan diagnostic equipment. You will need to go to your nearest Nissan dealer in case the oil and filter needs to be replaced.

With a Nissan Service Plan you will benefit from genuine Nissan parts and Nissan Genuine Motor Oil, which have been engineered specifically for Nissan vehicles.

As '**SERVICE REGENERATION**' is not a manufacturing fault, so the cost will **NOT** be covered under warranty.

Print | Close

Exterior design | Interior design | Technology & Performance | Interior space | Nissan Intelligent Mobility | Style & Accessories | **Technical Specifications** | Further Information

Page 1 | Page 2 | Page 3 | Page 4 | Page 5 | Page 6 | Page 7 | Page 8

REQUEST A TEST DRIVE

# NISSAN INSURANCE

Nissan Insurance has been designed to help Nissan drivers get the most from their cover, boasting the following benefits:

- Use of Nissan Approved Repairers and franchised trained technicians
- Use of only Nissan genuine parts for repairs
- Guaranteed repair for 3 years
- New car replacement, if your vehicle is written off when under 12 months old
- Cover provided for driving in the EU, subject to a maximum 30 days per year
- Personal accident benefit up to £5,000
- Up to £100 personal belongings cover
- £300 towards replacement locks if your keys are lost or stolen

Call Nissan Insurance today on 0344 335 3780

Calls charged at the same rate as local 01 and 02 numbers and will be included in inclusive call packages from mobiles. Lines are open Monday to Friday 9am-7pm and Saturday 9am-5pm.

## Terms and Conditions

Quotations are subject to underwriting terms and acceptance criteria.

Nissan Insurance is arranged by Europa Group Ltd trading as Nissan Insurance Services on behalf of Maiden Global Holdings Ltd (registered in England with company number 07324422) Registered office: Albion House, Valley Business Centre, Gordon Road, High Wycombe, HP13 6EQ. Authorised and regulated by the Financial Conduct Authority. Financial Services Register number 555397. Europa Group Limited is authorised and regulated by the Financial Conduct Authority. Financial Services Register No. 309794. Registered as a limited company in England and Wales No. 3279177. Registered office: Europa House, Midland Way, Thornbury, Bristol BS35 2JX.

[Print](#) | [Close](#)

[Exterior design](#) | [Interior design](#) | [Technology & Performance](#) | [Interior space](#) | [Nissan Intelligent Mobility](#) | [Style & Accessories](#) | [Technical Specifications](#) | [Further Information](#)

[Page 1](#) | [Page 2](#) | [Page 3](#)

[REQUEST A TEST DRIVE](#)

## FURTHER INFORMATION

**On The Road Prices.** On The Road Price includes 12 months Government Vehicle Excise Duty (VED) determined by CO<sub>2</sub> emissions figure and fuel type, £55 Government First Registration Fee, number plates and delivery to the Nissan Dealership.  
VED rates are determined by the vehicles CO<sub>2</sub> emissions figures and by the type of fuel used.  
The following table applies to all new car registrations:

VED Band		0	1-50	51-75	76-90	91-100	101-110	111-130	131-150	151-170	171-190	191-225	226-255	over 255
Tax Year 2017 to 2018	CO <sub>2</sub> Emissions Figure (g/km)*													
	First Year Rate	£0.00	£10.00	£25.00	£100.00	£120.00	£140.00	£160.00	£200.00	£500.00	£800.00	£1,200.00	£1,700.00	£2,000.00
Tax Year 2018 to 2019	CO <sub>2</sub> Emissions Figure (g/km)*													
	First Year Rate	£0.00	£10.00	£25.00	£105.00	£125.00	£145.00	£165.00	£205.00	£515.00	£830.00	£1,240.00	£1,760.00	£2,070.00
	First Year Rate for Diesel Passenger Cars	£0.00	£25.00	£105.00	£125.00	£145.00	£165.00	£205.00	£515.00	£830.00	£1,240.00	£1,760.00	£2,070.00	£2,070.00

\* g/km = grammes of CO<sub>2</sub> per kilometre travelled.

All Light Commercial Vehicles will have a standard VED rate of £240 per annum.

### VAT and VED

VAT application is based on current HMRC guidelines, please check with HMRC for specific guidance for the vehicle you are purchasing.  
VED is determined by the DVLA, please check with the DVLA for specific guidance for the vehicle you are purchasing.

**Optional equipment.** This price list features a selection from the full range of optional equipment, be they standard, dealer fit or factory options.

For further information and details of the full range, please contact your local Authorised Nissan Dealer.

Nissan's commitment to you includes all of the following benefits – some of which may be the reasons why you chose your new Nissan in the first place:

**Manufacturer's warranty** – Nissan's comprehensive warranty provides cover for your new Nissan from defects in materials or workmanship. Your vehicle is covered in all European Countries where Authorised Nissan Dealers are located. If your vehicle becomes inoperative due to a warrantable defect a towing service, when necessary, to the Authorised Nissan Dealer is covered. If a warrantable defect abroad takes more than six hours to repair, the Touring Assistance Programme will pay for a hotel room or rental car up to a certain maximum. The paint warranty covers painted body parts (excluding the underbody) for three years regardless of mileage driven. For further details please contact your local Authorised Nissan Dealer. Petrol and diesel engine cars - Three-year/60,000 miles. Petrol and diesel engine LCVs and Navara - Five-year/100,000 miles.

**LEAF and e-NV200** – Nissan LEAF and e-NV200 offer a 5-year / 60,000 mile warranty on all EV dedicated components, including the lithium-ion battery, and a 3-year / 60,000 mile warranty on standard components. This is with the expression of e-NV200 which offers a 5-year / 60,000 mile warranty on mechanical components and corrosion\*. The Nissan LEAF and e-NV200 lithium-ion battery state of health guarantee protects against battery capacity loss (less than 9 bars out of 12) as shown on LEAF and e-NV200's capacity gauge for a period of 5 years / 60,000 miles. For LEAF and e-NV200 flex customers, the battery state of health guarantee applies for the duration of the battery lease.

\*The Basic Vehicle Warranty for e-NV200, according to 3.1 of the Warranty Booklet and Maintenance Record, is extended to 5 years (from the warranty start date) / 60,000 miles (whichever comes first). Only vehicles registered on or after 1st November 2016 are eligible for the Extended Warranty. Body parts and paint excluded during year four and year five. Terms and exclusions apply, for further information please see Extended Warranty Terms and Conditions. Apart from the afore-mentioned, all warranty conditions included in the Warranty Booklet and Maintenance Record remain unchanged. Issuer of this Extended Warranty is Nissan International Insurance Ltd

Print | Close

Exterior design | Interior design | Technology & Performance | Interior space | Nissan Intelligent Mobility | Style & Accessories | Technical Specifications | **Further Information**

Page 1 | Page 2 | Page 3

REQUEST A TEST DRIVE

## FURTHER INFORMATION

Nissan European Roadside Assistance is provided for the period of your new vehicle manufacturer warranty.

Roadside, Recovery and At Home products are provided by RAC Motoring Services (Registered No. 1424399, Registered Office: 8 Surrey Street, Norwich, NR1 3NG). RAC Motoring Services (in respect of insurance mediation activities only) is authorised and regulated by the Financial Conduct Authority and within the jurisdiction of the Financial Ombudsman Service and Financial Services Compensation Scheme.

Onward Travel and European Cover are underwritten by RAC Insurance Limited (Registered No. 1424399, Registered Office: 8 Surrey Street, Norwich, NR1 3NG). RAC Insurance Limited is authorised and regulated by the Financial Conduct Authority and within the jurisdiction of the Financial Ombudsman Service and Financial Services Compensation Scheme.

Nissan EV Pan-European Roadside Assistance is provided by AXA for 3 years or 60,000 miles, whichever comes first.

For LEAF and e-NV200 Flex (battery lease) customers, the Nissan EV Pan-European Roadside Assistance will cover you for the duration of your battery lease agreement should your Nissan EV run out of battery charge. For any other repair work, the basic warranty clause still applies. Benefits and Services are provided by AXA Assistance. AXA Assistance is authorised and regulated by the Financial Conduct Authority (FCA).

FCA Register number 439069. AXA Assistance UK Limited (registration 2638890) 106 - 118 Station Road, Redhill Surrey RH1 1PR

**Peace of mind** – we always guarantee our workmanship, and all genuine Nissan replacement parts and accessories have a minimum of one year's warranty. Accessory prices are subject to change, please see your nearest dealership for the most up to date prices. Our technicians have been trained by Nissan to work on your vehicle and they are the Nissan specialists. They use the latest equipment to ensure your vehicle is given the best treatment. Accessory prices are subject to change, please see your nearest dealership for the most up to date prices.

**Recyclability** – we take all our environmental responsibilities very seriously - innovation today comes with a deep respect for the environment. Our engines are now much more unobtrusive and their emissions have been considerably reduced. All our vehicles are designed with recycling in mind.

**Nissan Finance** offers a wide range of flexible finance schemes to meet the needs of both our retail and business customers. Preferences, Hire Purchase, Nissan Contract Hire and Finance Lease, all offer the in-built flexibility to make the package tailor-made to meet your individual needs. We also provide added security to your finance agreement with a comprehensive range of payment protection plans. Ask your local Authorised Nissan Dealer for details.

**The Nissan Motability Programme** developed in association with the registered charity Motability enables those with difficulty getting around to obtain selected models on preferential terms.

All prices in this list are quoted in pounds sterling. Value Added Tax (VAT) has been calculated at 20%.

While all reasonable effort has been made to ensure the accuracy of the information provided, due to Nissan's policy of continuous product improvement, all particulars Contained are subject to constant revision and Nissan reserves the right to change, alter or modify, among other things, specifications, colours and prices of models without notice at any time. Accordingly you should consult your local Authorised Nissan Dealer for the exact introduction dates of all models and for the most up-to-date information.

Images shown are for guidance purposes. In some instances photos are of non UK specification vehicles and do not represent a specific model, grade or offer.

[Print](#) | [Close](#)

[Exterior design](#) | [Interior design](#) | [Technology & Performance](#) | [Interior space](#) | [Nissan Intelligent Mobility](#) | [Style & Accessories](#) | [Technical Specifications](#) | [Further Information](#)

[Page 1](#) | [Page 2](#) | [Page 3](#)

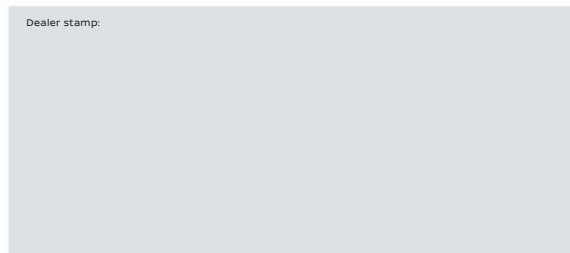
[REQUEST A TEST DRIVE](#)



Nissan. Innovation that excites.

visit our website at: [www.nissan.co.uk](http://www.nissan.co.uk)

Dealer stamp:



Follow Nissan Qashqai on:



Every effort has been made to ensure that the content of this publication is correct at the time of going to press (April 2019). This brochure has been produced featuring prototype vehicles exhibited at motor shows. In accordance with the company's policy of continuously improving its products, Nissan International reserves the right to change at any time the specification and the vehicles described and shown in this publication. Nissan dealers will be informed of any such modifications as quickly as possible. Please check with your local Nissan dealer to receive the most up-to-date information. Because of the limitations of the printing processes used, the colours shown in this brochure may differ slightly from the actual colours of the paint and interior trim materials used. All rights reserved. Reproduction in whole or part of this brochure without the written permission of Nissan International is forbidden.

Part Number: 99999-54404. Printed in the UK.

Print | Close

[Exterior design](#) | [Interior design](#) | [Technology & Performance](#) | [Interior space](#) | [Nissan Intelligent Mobility](#) | [Style & Accessories](#) | [Technical Specifications](#) | [Further Information](#)

[REQUEST A TEST DRIVE](#)

